



IRB 250 C1 EC

- Insulated duct fan.
- Equipped with 50 mm of thermal and acoustic insulation makes it ideal for handling cold air.
- Designed for high pressure and long, complicated duct runs.
- The design prioritise functionality, durability and longevity.
- Impeller with backward curved blades.
- The external rotor motor has maintenance-free sealed ball-bearings and is very energy efficient.
- Speed controlling can be done with the built-in potentiometer, 0-10 V alt. external control.
- Integrated motor protection.
- Junction box has enclosure class IP 54.
- The housing is manufactured from galvanized sheet steel.
- The fan is intended to be installed in a duct system.
- A duct connected fan can be installed outside or in damp environments.

Accessories

- Speed controller MS EC
- Controller IQ-Reg EC
- Pressure regulator CALAIR-PR-230V
- Pressure regulator FKP-R
- MB Universal
- MK 250
- BSV 250
- RSK 250
- VK 250
- LDC 250
- FLF 250
- FLK 250
- YG 250

7880137 IRB 250 C1 EC-y1

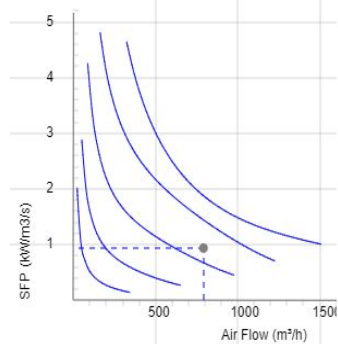
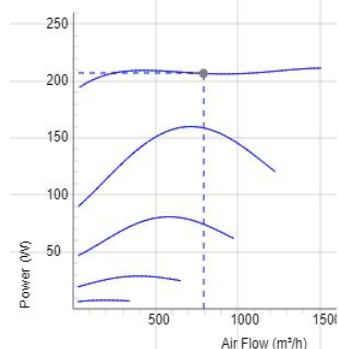
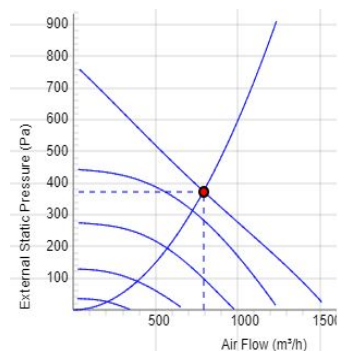
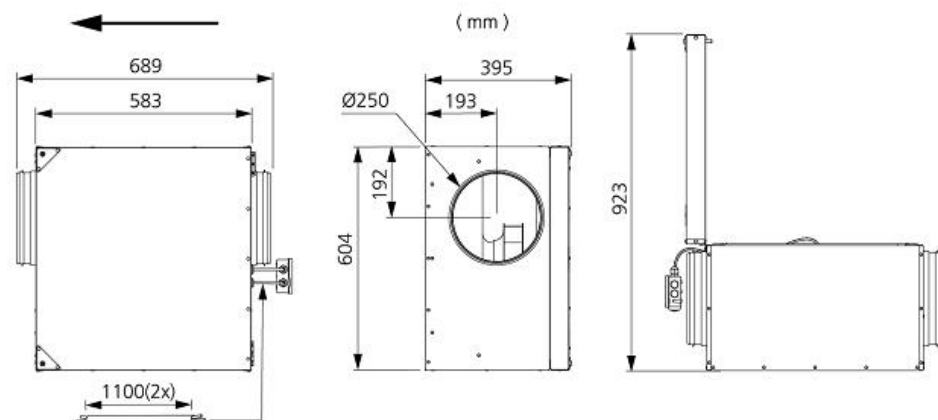
TECHNICAL DATA

Voltage	230 V
Phase	1 ~
Frequency	50/60 Hz
Power	212 W
Current	1.67 A
Speed	2540 r.p.m.
Max. temperature of transported air	60 °C
Sound pressure level at 3 m	43 dB(A)
Weight	25.3 kg
Enclosure class	44 IP
Insulation class, motor	F
Duct connection	250 mm
Max. flow @ 0Pa	1555.2043545722 m³/h
Max. pressure	762 Pa
Voltage range	200-277 V

SOUND DATA

	Flow (m³/h)	L_{WA} tot dB (A)	63Hz	125Hz	250Hz	500Hz	1KHz	2KHz	4KHz	8KHz
5. Surrounding Lw dB(A) 10V	868	50	34	40	45	47	38	36	34	29
5. Outlet Lw dB(A) 10V	868	72	59	59	62	66	64	67	60	54
5. Inlet Lw dB(A) 10V	868	62	56	55	57	52	49	49	47	42
4. Inlet Lw dB(A) 8V	788	60	54	53	55	50	48	47	44	40
3. Inlet Lw dB(A) 6V	612	56	49	48	54	42	43	40	38	35
2. Inlet Lw dB(A) 4V	403	51	41	43	50	36	35	32	31	31
1. Inlet Lw dB(A) 2V	212	39	28	31	34	27	29	30	28	30

DIMENSIONS



Voltage steps

1	2	3	4	5
2V	4V	6V	8V	10V