

IRB 250 D1 EC

- Insulated duct fan.
- Equipped with 50 mm of thermal and acoustic insulation makes it ideal for handling cold air.
- Designed for high pressure and long, complicated duct runs.
- The design prioritise functionality, durability and longevity.
- Impeller with backward curved blades.
- The external rotor motor has maintenance-free sealed ball-bearings and is very energy efficient.
- Speed controlling can be done with the built-in potentiometer, 0-10 V alt. external control.
- Integrated motor protection.
- Junction box has enclosure class IP 54.
- The housing is manufactured from galvanized sheet steel.
- The fan is intended to be installed in a duct system.
- A duct connected fan can be installed outside or in damp environments.

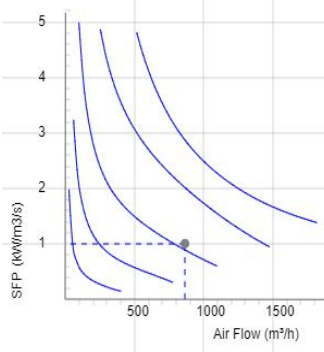
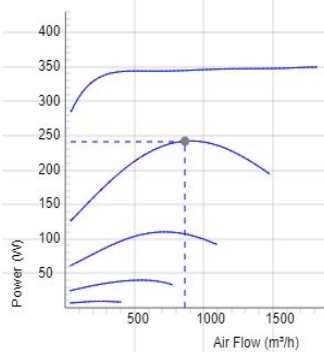
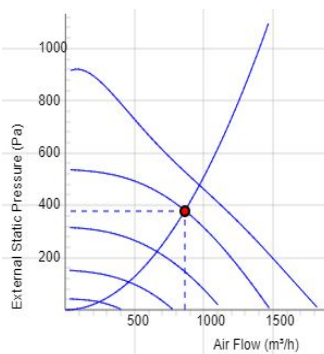
Accessories

- Speed controller MS EC
- Controller IQ-Reg EC
- Pressure regulator CALAIR-PR-230V
- Pressure regulator FKP-R
- MB Universal
- MK 250
- BSV 250
- RSK 250
- VK 250
- LDC 250
- FLK 250
- FLK 250
- YG 250

7880138 IRB 250 D1 EC-y1

TECHNICAL DATA

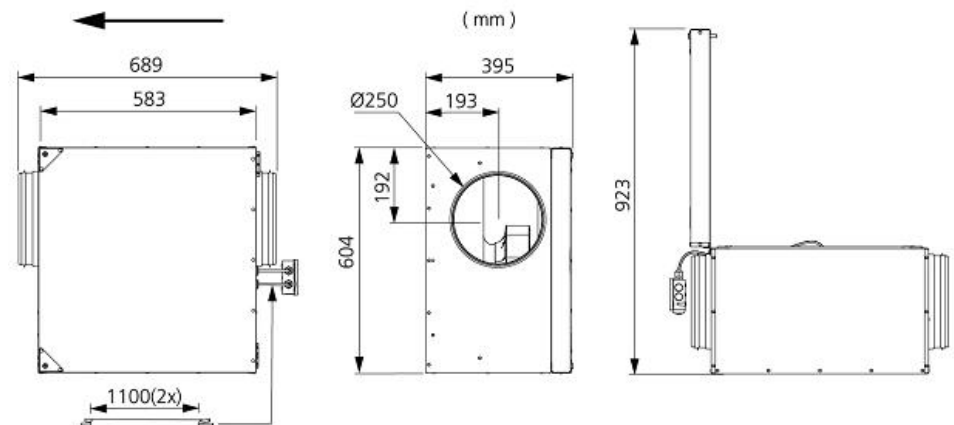
Voltage	230 V
Phase	1 ~
Frequency	50/60 Hz
Power	352 W
Current	2.7 A
Speed	2770 r.p.m.
Max. temperature of transported air	60 °C
Sound pressure level at 3 m	49 dB(A)
Weight	25.3 kg
Enclosure class	44 IP
Insulation class, motor	F
Duct connection	250 mm
Max. flow @ 0Pa	1836.0051408144 m³/h
Max. pressure	914 Pa
Voltage range	200-277 V



SOUND DATA

	Flow (m³/h)	L _{WA} tot dB (A)	63Hz	125Hz	250Hz	500Hz	1KHz	2KHz	4KHz	8KHz
5. Surrounding Lw dB(A) 10V	1030	56	41	45	51	52	43	41	38	33
5. Outlet Lw dB(A) 10V	1030	79	63	64	67	72	72	74	67	62
5. Inlet Lw dB(A) 10V	1030	67	60	61	62	55	52	53	52	46
4. Inlet Lw dB(A) 8V	1015	65	57	59	60	55	50	50	48	43
3. Inlet Lw dB(A) 6V	792	59	52	52	56	44	44	43	41	35
2. Inlet Lw dB(A) 4V	551	54	44	46	53	35	35	32	30	23
1. Inlet Lw dB(A) 2V	306	38	31	34	33	21	16	15	13	10

DIMENSIONS



Voltage steps

1	2	3	4	5
2V	4V	6V	8V	10V