

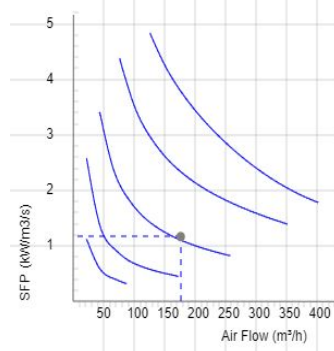
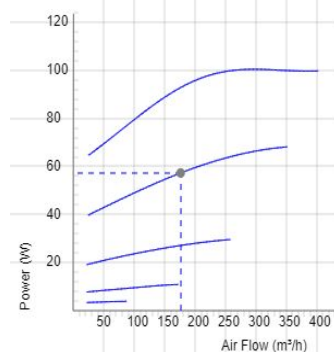
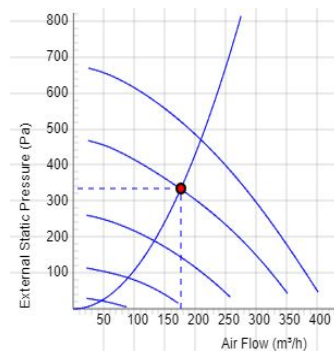


LPKB Silent 100 C1 EC

- Low profile duct fan with circular connections.
- A small and useful duct fan which are perfect for spaces with minimum height clearance.
- Equipped with a built in silencer on the inlet side for an even lower sound level.
- High capacity and efficiency.
- Impeller with backward curved blades.
- The external rotor motor has maintenance-free sealed ball-bearings and is very energy efficient.
- Speed controlling can be done with the built-in potentiometer, 0-10 V alt. external control.
- Integrated motor protection.
- Junction box has enclosure class IP 54.
- Fan housing is manufactured from galvanized sheet steel.
- Duct connections are equipped with rubber seals.
- The fan is intended to be installed in a duct system.
- A duct connected fan can be installed outside or in damp environments.
- The mounting brackets simplify installation in any position.

Accessories

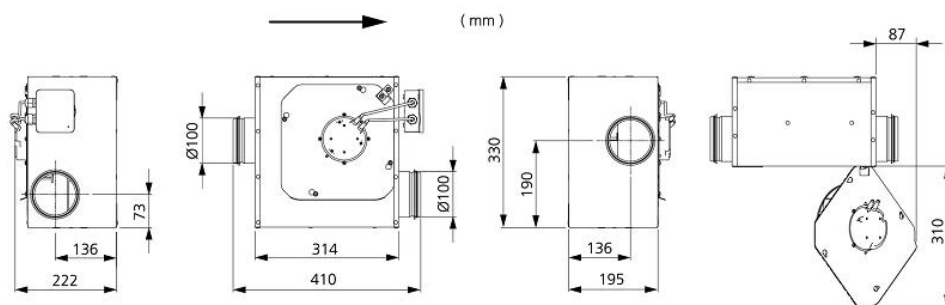
- Speed controller MS EC
- Controller IQ-Reg EC
- Pressure regulator CALAIR-PR-230V
- Pressure regulator FKP-R
- MK 100
- FLK 100
- FLF 100
- BSV 100
- RSK 100
- YG 100
- VK 100
- LDC 100


TECHNICAL DATA

Voltage	230 V
Phase	1 ~
Frequency	50/60 Hz
Power	101 W
Current	0.82 A
Speed	3480 r.p.m.
Max. temperature of transported air	60 °C
Sound pressure level at 3 m	54 dB(A)
Weight	5.9 kg
Enclosure class	44 IP
Insulation class, motor	F
Duct connection	100 mm
Max. flow @ 0Pa	421.2011793633 m³/h
Max. pressure	674 Pa
Voltage range	200-277 V

**7540807
LPKB Silent 100 C1 EC-y2**
SOUND DATA

	Flow (m³/h)	L_{WA} tot dB (A)	63Hz	125Hz	250Hz	500Hz	1KHz	2KHz	4KHz	8KHz
5. Surrounding Lw dB(A) 10V	277	61	34	45	53	59	52	52	45	36
5. Outlet Lw dB(A) 10V	277	80	63	69	71	75	72	74	67	59
5. Inlet Lw dB(A) 10V	277	70	56	65	65	64	57	55	51	42
4. Inlet Lw dB(A) 8V	234	67	57	63	63	56	50	48	47	38
3. Inlet Lw dB(A) 6V	169	62	53	58	57	48	42	40	38	27
2. Inlet Lw dB(A) 4V	112	52	45	48	47	37	31	28	24	10
1. Inlet Lw dB(A) 2V	61	35	30	32	28	22	10	9	8	5

DIMENSIONS

Voltage steps

1	2	3	4	5
2V	4V	6V	8V	10V