

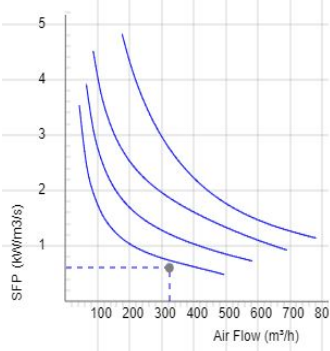
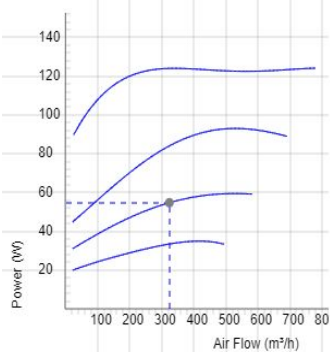
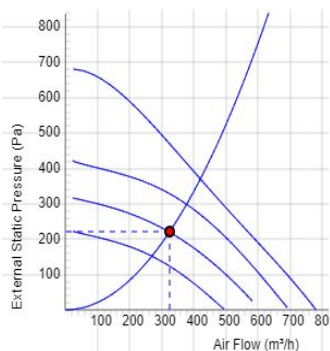


LPKB Silent 160 C1 EC ÖSTBERG

- Low profile duct fan with circular connections.
- A small and useful duct fan which are perfect for spaces with minimum height clearance.
- Equipped with a built in silencer on the inlet side for an even lower sound level.
- High capacity and efficiency.
- Impeller with backward curved blades.
- The external rotor motor has maintenance-free sealed ball-bearings and is very energy efficient.
- Speed controlling can be done with the built-in potentiometer, 0-10 V alt. external control.
- Integrated motor protection.
- Junction box has enclosure class IP 54.
- Fan housing is manufactured from galvanized sheet steel.
- Duct connections are equipped with rubber seals.
- The fan is intended to be installed in a duct system.
- A duct connected fan can be installed outside or in damp environments.
- The mounting brackets simplify installation in any position.

Accessories

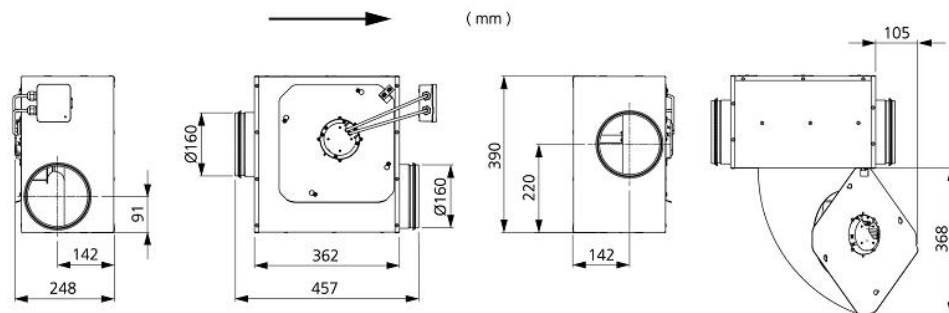
- Speed controller MS EC
- Controller IQ-Reg EC
- Pressure regulator CALAIR-PR-230V
- Pressure regulator FKP-R
- MK 160
- BSV 160
- RSK 160
- VK 160
- LDC 160


TECHNICAL DATA

7540746 LPKB Silent 160 C1 EC-y1	
Voltage	230 V
Phase	1 ~
Frequency	50/60 Hz
Power	124 W
Current	0.97 A
Speed	2920 r.p.m.
Max. temperature of transported air	60 °C
Sound pressure level at 3 m	53 dB(A)
Weight	7.5 kg
Enclosure class	44 IP
Insulation class, motor	F
Duct connection	160 mm
Max. flow @ 0Pa	781.20218736612 m³/h
Max. pressure	684 Pa
Voltage range	200-277 V

SOUND DATA

	Flow (m³/h)	L _{WA} tot dB (A)	63Hz	125Hz	250Hz	500Hz	1KHz	2KHz	4KHz	8KHz
4. Surrounding Lw dB(A) 10V	443	60	33	45	54	57	48	48	41	32
4. Outlet Lw dB(A) 10V	443	79	61	64	70	77	68	67	65	54
4. Inlet Lw dB(A) 10V	443	69	57	63	66	61	56	52	51	43
3. Inlet Lw dB(A) 7V	378	66	54	61	63	58	51	48	46	38
2. Inlet Lw dB(A) 6V	324	63	51	58	60	55	47	44	41	33
1. Inlet Lw dB(A) 5V	281	60	52	55	56	49	42	38	35	27

DIMENSIONS

Voltage steps

1	2	3	4
5V	6V	7V	10V