



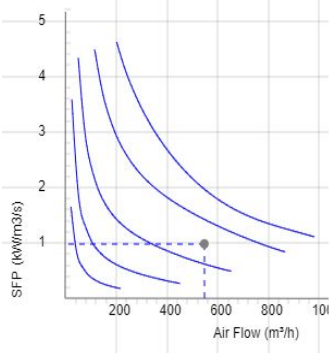
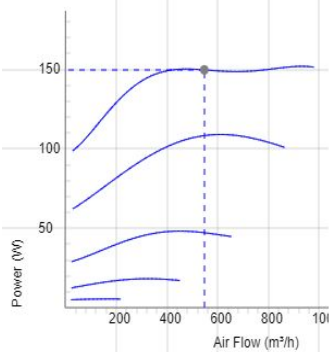
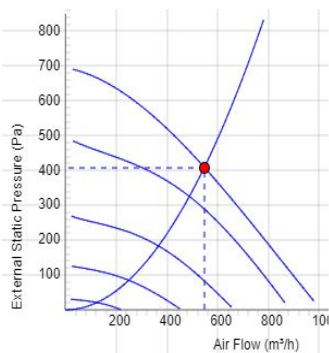
LPKB Silent 200 C1 EC



- Low profile duct fan with circular connections.
- A small and useful duct fan which are perfect for spaces with minimum height clearance.
- Equipped with a built in silencer on the inlet side for an even lower sound level.
- High capacity and efficiency.
- Impeller with backward curved blades.
- The external rotor motor has maintenance-free sealed ball-bearings and is very energy efficient.
- Speed controlling can be done with the built-in potentiometer, 0-10 V alt. external control.
- Integrated motor protection.
- Junction box has enclosure class IP 54.
- Fan housing is manufactured from galvanized sheet steel.
- Duct connections are equipped with rubber seals.
- The fan is intended to be installed in a duct system.
- A duct connected fan can be installed outside or in damp environments.
- The mounting brackets simplify installation in any position.

Accessories

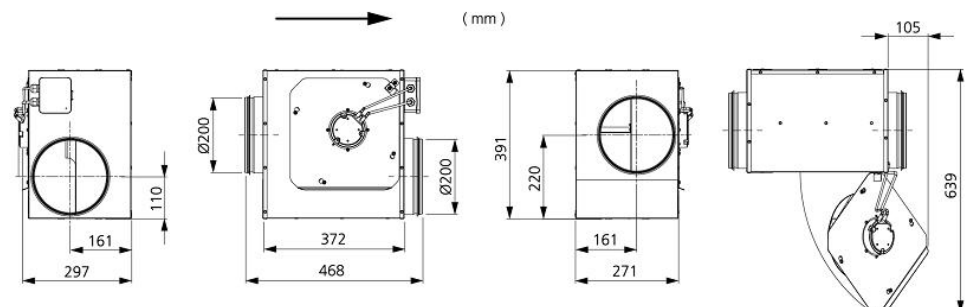
- Speed controller MS EC
- Controller IQ-Reg EC
- Pressure regulator CALAIR-PR-230V
- Pressure regulator FKP-R
- MK 200
- BSV 200
- RSK 200
- YG 200
- LDC 200
- FLF 200
- FLK 200
- VK 200


TECHNICAL DATA

| | |
|-------------------------------------|----------------------|
| Voltage | 230 V |
| Phase | 1 ~ |
| Frequency | 50/60 Hz |
| Power | 154 W |
| Current | 1.22 A |
| Speed | 2880 r.p.m. |
| Max. temperature of transported air | 60 °C |
| Sound pressure level at 3 m | 53 dB(A) |
| Weight | 8.4 kg |
| Enclosure class | 44 IP |
| Insulation class, motor | F |
| Duct connection | 200 mm |
| Max. flow @ 0Pa | 1008.0028224079 m³/h |
| Max. pressure | 691 Pa |
| Voltage range | 200-277 V |

**7540817
LPKB Silent 200 C1 EC-y2**
SOUND DATA

| | Flow (m³/h) | L _{WA} tot dB (A) | 63Hz | 125Hz | 250Hz | 500Hz | 1KHz | 2KHz | 4KHz | 8KHz |
|-----------------------------|-------------|----------------------------|------|-------|-------|-------|------|------|------|------|
| 5. Surrounding Lw dB(A) 10V | 605 | 60 | 34 | 40 | 52 | 58 | 48 | 48 | 39 | 31 |
| 5. Outlet Lw dB(A) 10V | 605 | 80 | 63 | 67 | 72 | 77 | 71 | 73 | 66 | 58 |
| 5. Inlet Lw dB(A) 10V | 605 | 69 | 58 | 63 | 65 | 61 | 55 | 54 | 53 | 45 |
| 4. Inlet Lw dB(A) 8V | 558 | 67 | 56 | 61 | 63 | 58 | 52 | 50 | 49 | 40 |
| 3. Inlet Lw dB(A) 6V | 407 | 62 | 50 | 56 | 59 | 49 | 43 | 42 | 39 | 29 |
| 2. Inlet Lw dB(A) 4V | 288 | 52 | 41 | 49 | 48 | 39 | 32 | 30 | 23 | 13 |
| 1. Inlet Lw dB(A) 2V | 140 | 38 | 31 | 35 | 33 | 21 | 14 | 6 | 5 | 4 |

DIMENSIONS

Voltage steps

| | | | | |
|----------|----------|----------|----------|----------|
| 1 | 2 | 3 | 4 | 5 |
| 2V | 4V | 6V | 8V | 10V |