



LPKB 200 C1 EC



- Low profile duct fan with circular connections.
- A small and useful duct fan which are perfect for spaces with minimum height clearance.
- With one connection on the inlet side.
- High capacity and efficiency with low sound levels.
- Impeller with backward curved blades.
- The external rotor motor has maintenance-free sealed ball-bearings and is very energy efficient.
- Speed controlling can be done with the built-in potentiometer, 0-10 V alt. external control.
- Integrated motor protection.
- Junction box has enclosure class IP 54.
- Fan housing is manufactured from galvanized sheet steel.
- Duct connections are equipped with rubber seals.
- The fan is intended to be installed in a duct system.
- A duct connected fan can be installed outside or in damp environments.
- The mounting brackets simplify installation in any position.

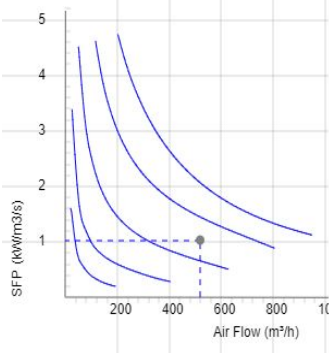
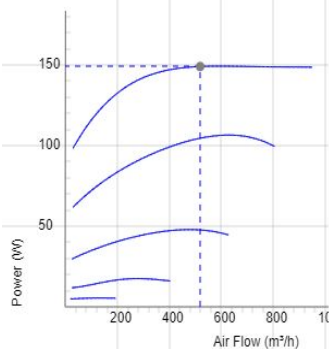
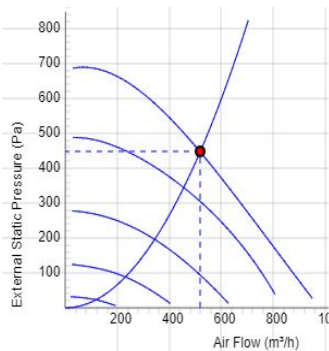
Accessories

- Speed controller MS EC
- Controller IQ-Reg EC
- Pressure regulator CALAIR-PR-230V
- Pressure regulator FKP-R
- MK 200
- BSV 200
- RSK 200
- YG 200
- VK 200
- FLK 200
- FLF 200
- LDC 200

TECHNICAL DATA

| | |
|-------------------------------------|----------------------|
| Voltage | 230 V |
| Phase | 1 ~ |
| Frequency | 50/60 Hz |
| Power | 150 W |
| Current | 1.19 A |
| Speed | 2890 r.p.m. |
| Max. temperature of transported air | 60 °C |
| Sound pressure level at 3 m | 54 dB(A) |
| Weight | 7.4 kg |
| Enclosure class | 44 IP |
| Insulation class, motor | F |
| Duct connection | 200 mm |
| Max. flow @ 0Pa | 954.00267120748 m³/h |
| Max. pressure | 668 Pa |
| Voltage range | 200-277 V |

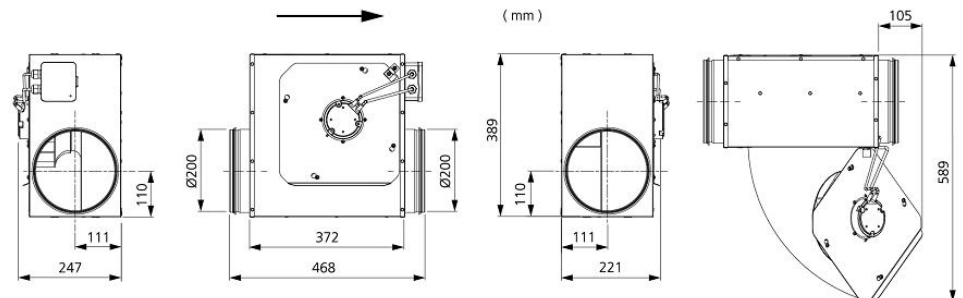
7540814
LPKB 200 C1 EC-y2



SOUND DATA

| | Flow (m³/h) | L _{WA} tot dB (A) | 63Hz | 125Hz | 250Hz | 500Hz | 1KHz | 2KHz | 4KHz | 8KHz |
|-----------------------------|-------------|----------------------------|------|-------|-------|-------|------|------|------|------|
| 5. Surrounding Lw dB(A) 10V | 608 | 61 | 37 | 44 | 54 | 58 | 51 | 51 | 43 | 35 |
| 5. Outlet Lw dB(A) 10V | 608 | 81 | 63 | 68 | 74 | 77 | 71 | 73 | 67 | 60 |
| 5. Inlet Lw dB(A) 10V | 608 | 76 | 59 | 65 | 70 | 72 | 65 | 66 | 61 | 54 |
| 4. Inlet Lw dB(A) 8V | 536 | 73 | 57 | 62 | 68 | 68 | 62 | 63 | 57 | 49 |
| 3. Inlet Lw dB(A) 6V | 407 | 67 | 51 | 57 | 64 | 61 | 55 | 55 | 49 | 38 |
| 2. Inlet Lw dB(A) 4V | 259 | 56 | 42 | 50 | 51 | 52 | 45 | 42 | 33 | 20 |
| 1. Inlet Lw dB(A) 2V | 133 | 40 | 32 | 35 | 34 | 33 | 23 | 13 | 8 | 5 |

DIMENSIONS



Voltage steps

| 1 | 2 | 3 | 4 | 5 |
|----|----|----|----|-----|
| 2V | 4V | 6V | 8V | 10V |